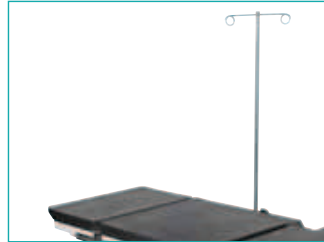


# Surgiline 2000R, 2500, 550S, 550SE Surgical Tables

## Standard Accessories

- ▶ Anaesthetist's frame (1 ea)
- ▶ I.V. stand (1 ea)
- ▶ Shoulder supports (2 ea) (Standard accessory for 2000R)
- ▶ Body supports (2 ea) (Standard accessory for 2000R)
- ▶ Arm boards (2 ea)
- ▶ Knee crutches (2 ea) (Standard accessory for 2000R)
- ▶ Compact stand for surgical table accessories (1 ea) (Standard accessory for 2000R)
- ▶ Body strap (2 ea for 2000R, 1 ea for 2500)
- ▶ Mattress (1 set)



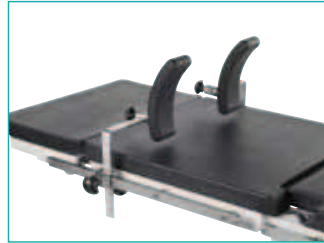
**I.V. stand**  
Ref: M3T 000 0 0



**Arm boards**  
Ref: M3M 000 0 0



**Compact stand for surgical table accessories**  
Ref: M3E 100 5 0 (Standard accessory for 2000R)



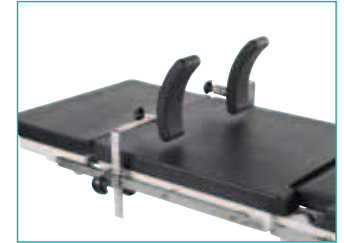
**Shoulder supports**  
Ref: M3P 000 0 0 (Standard accessory for 2000R)



**Knee crutches**  
Ref: M9N 000 0 0 (Standard accessory for 2000R)



**Polyurethane mattress**  
Ref: M2C 903 5 0 (2000R)  
Ref: M2D 901 5 0 (550)



**Shoulder supports**  
Ref: M3P 000 0 0



**Anaesthetist's frame**  
Ref: M3S 000 0 0



**Body supports**  
Ref: M3R 000 0 0 (Standard accessory for 2000R)



**Body strap**  
Ref: M9E 000 0 0



**Mattress**  
Ref: M2C 800 5 0 (2500)

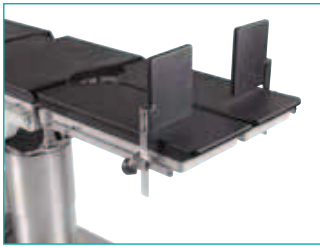


**Body supports**  
Ref: M3R 000 0 0

## Accessories

- ▶ Shoulder supports
- ▶ Body supports
- ▶ Foot support
- ▶ Arm support
- ▶ Wrist grip
- ▶ Knee rest
- ▶ Proctology attachment
- ▶ Radiographic tabletop assembly kit (2000R)
- ▶ Radiographic tabletop kit (2500, 550)
- ▶ X-ray cassette holder
- ▶ Waste tray
- ▶ Leg rest - Lithotomy position
- ▶ Arthroscopic knee crutch
- ▶ Horseshoe headrest
- ▶ Skull clamp
- ▶ Crossbar adaptor for skull clamp
- ▶ Head section, Height adjustable
- ▶ Arm/hand surgery board
- ▶ Stand for skull clamp and horseshoe headrest
- ▶ Knee crutches
- ▶ Compact stand for surgical table accessories





**Foot support**  
Ref: M3J 000 0 0



**Proctology attachment**  
Ref: M3I 000 0 0



**Leg rest - Lithotomy position**  
Ref: M2D 600 5 0



**Head section, Height adjustable**  
Ref: M9B 200 5 0 (2000R)  
Ref: M9B 000 0 0 (550)



**Knee crutches**  
Ref: M9N 000 0 0



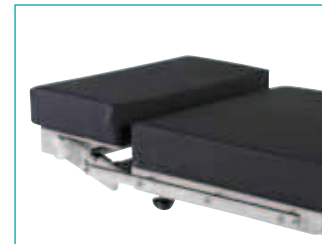
**Arm supports**  
Ref: M9M 000 0 0



**Radiographic tabletop assembly kit**  
Ref: M2C 400 5 0 (2000R)  
**Radiographic tabletop kit**  
Ref: M3V 000 0 0 (550), M3U 010 0 0 (2500)



**Arthroscopic knee crutch**  
Ref: M2D 309 5 0



**Head section, Height adjustable**  
Ref: M9B 250 0 0 (2500)



**Compact stand for surgical accessories**  
Ref: M3E 100 5 0



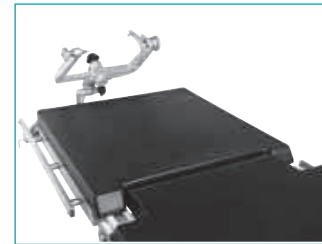
**Wrist grip**  
Ref: M2D 333 5 0



**X-ray cassette holder**  
Ref: M9D 000 0 0



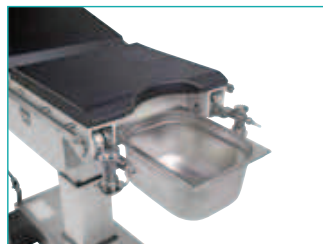
**Arm/hand surgery board**  
Ref: M9M 100 0 0



**Skull clamp**  
Ref: M9A 000 0 0



**Knee rest**  
Ref: M9L 000 0 0 (2000R, 2500)  
Ref: M3O 000 0 0 (550)



**Waste tray**  
Ref: M9H 000 0 0 (2000R, 2500)  
Ref: M3Z 000 0 0 (500)



**Horseshoe headrest**  
Ref: M3F 000 0 0



**Crossbar adaptor for skull clamp**  
Ref: M9A 001 5 0



**Stand for skull clamp and horseshoe headrest**  
Ref: M9K 000 0 0

